

LU-VE Sweden AB  
Tel +46 454 334 00  
info.se@luvegroup.com

Project Ref. Trane CZ\_VŠB Ostrava  
Item Ref. FRC 1-3  
Date 16.09.2025  
Prgver. 2404.1 05.12.2024

	Air Data	Fluid Data	Remark
Flow	49,72 m³/s	12,90 l/s	
Inlet Temp.	6,0 °C	16,0 °C	
Outlet Temp.	11,3 °C	9,0 °C	
Pressure Drop		79 kPa	
Fluid Velocity		1,10 m/s	
Fluid		35 % weight [tf=-16 °C]	Propylene Glycol-Water

Model	VX3-D-100Q1L-24-3D-5B1-850-2x30
Size	24
Total Capacity	361,4 kW
Required Capacity	360,0 kW
Fin material/spacing	Aluminium @ 2,1 mm
No. of Circuits	2x30
Tube Volume	565,6 l
Connections In/Out	2 x DN65/PN10 - 2 x DN65/PN10 Same Side
Sound Level	63 dB(A), 10 m EN13487 (60 dB(A), 10 m Free Field)
Sound Power Level, LwA	95 dB(A), [LwA]
No. of Fans/Diameter/Speed	8 / 1000 mm / 850/min
Motor Data/motor	3~400 V 2,6 kW 4,00 A Low Energy Motor - EC
Total Electric Inlet Power P1	18,78 kW
Dimension L x W x H	6036 x 2244 x 2405 mm
Surface Area	3111,4 m² / +0,0 % Surface Margin
Dry Weight approx.	2227 kg
Allowable Pressure, Ps	10 bar

### Accessories

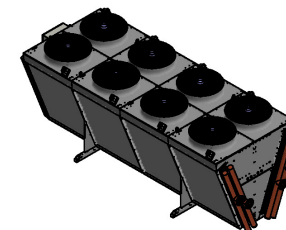
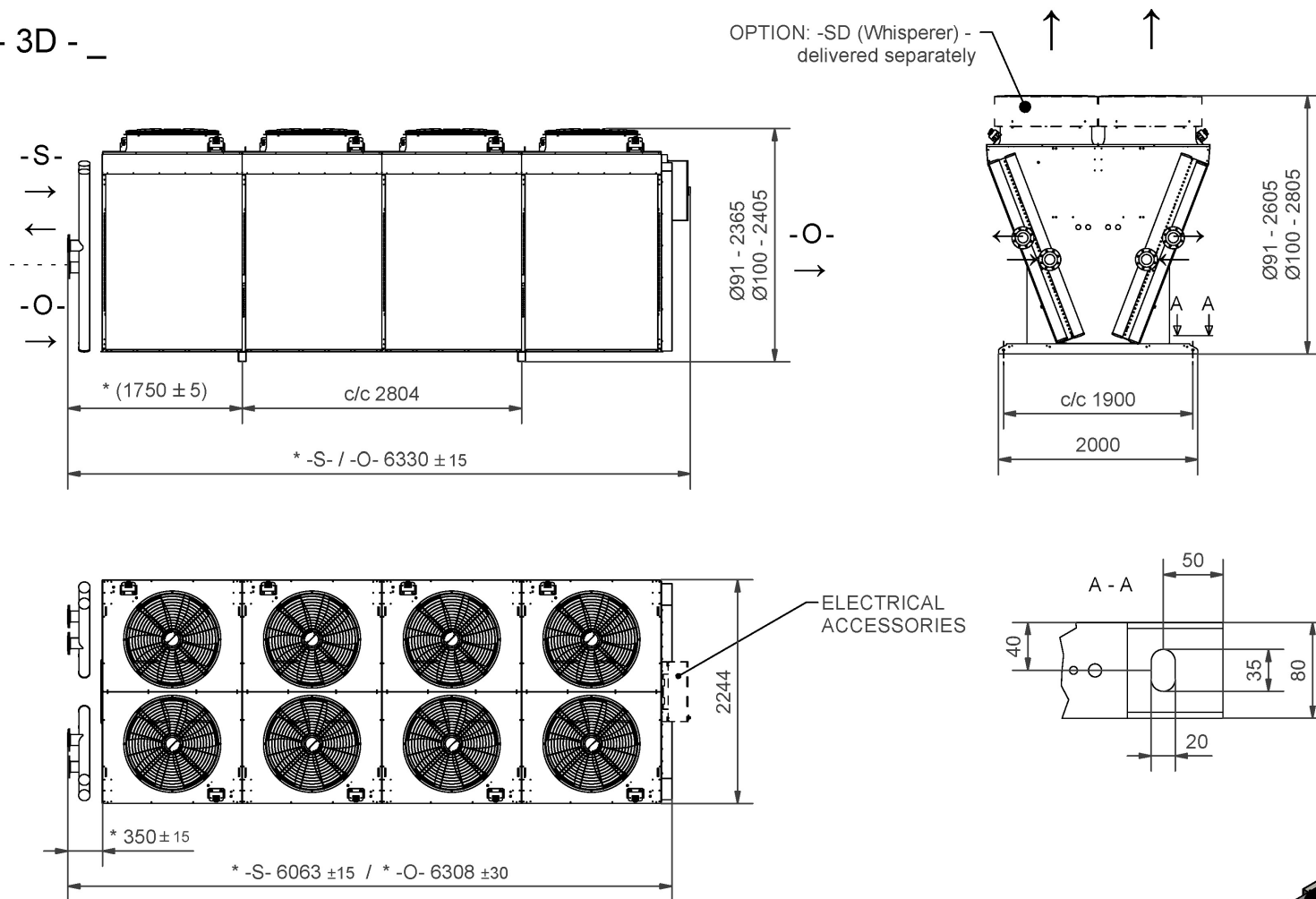
PS - Standard RAL 7045  
LSS - Lockable Safety Switches Standard  
ECC-EC Communication System  
CT - Temperature Sensor  
EC - Common Fault Signal  
BC - Bypass Contactor  
MB - Modbus RTU  
TW - 0-10 V signal for shunt valve  
VD5 - Vibration Dampers 31079072 4 pcs



### Ordering Code

GD100Q1L-3D245B1-DV-6P-340050-30-16CU38S-AL15LR-F-1x65-1x65-S-Z275  
PS-LSS-ECC-CT-EC-BC-MB-TW-VD5

VX3 - \_ - 24 - 3D - \_



Notes:  
 illustrates -S- "same side" with DN100. Correct dimension for chosen product upon request.  
 \* Differ depending on chosen header size and fan speed.