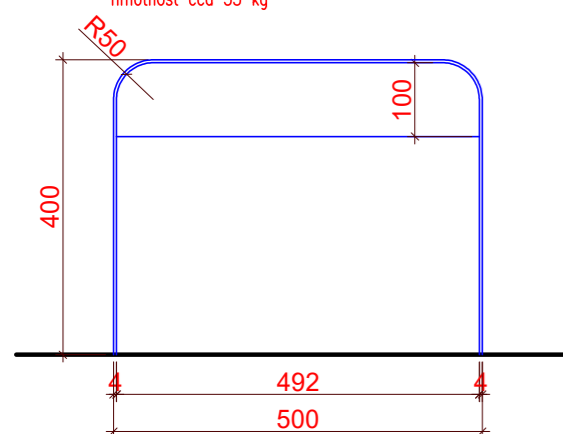
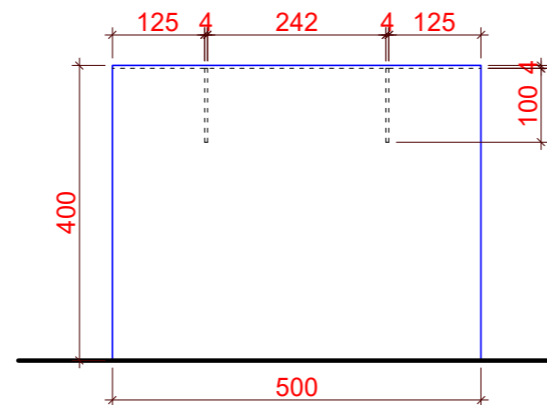
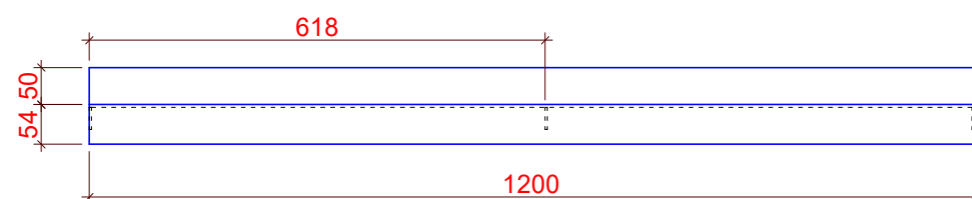
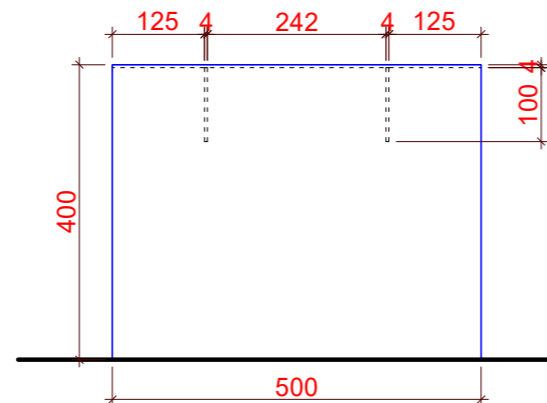


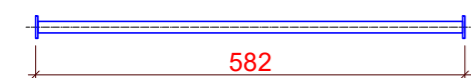
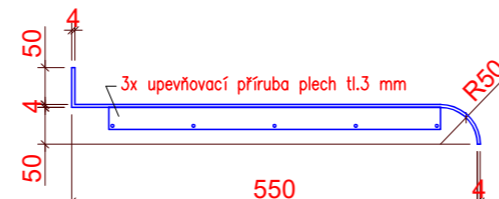
KS 90
hmotnost cca 33 kg



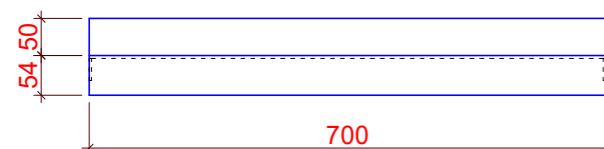
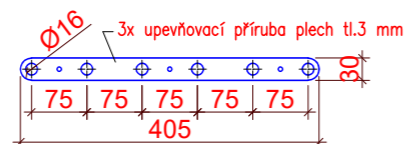
KS 50
hmotnost cca 20 kg



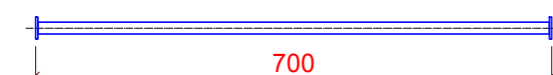
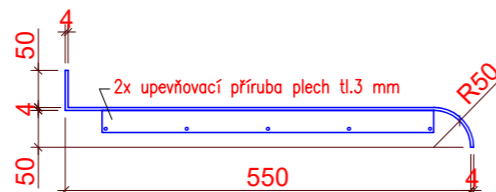
ocelový sedák A
hmotnost cca 27 kg



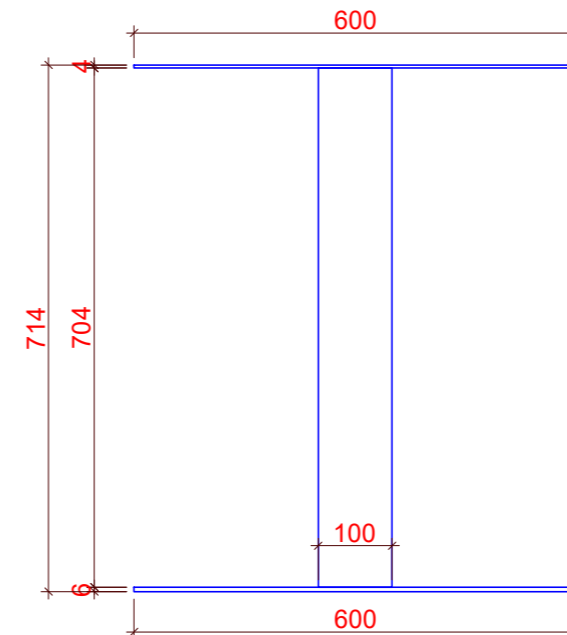
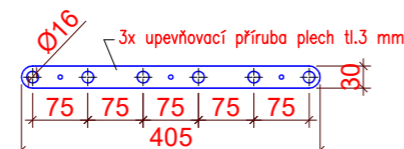
trubková police A
6x ocelová trubka 16/2 mm



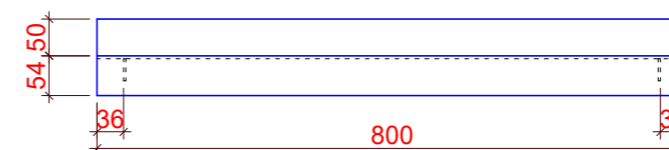
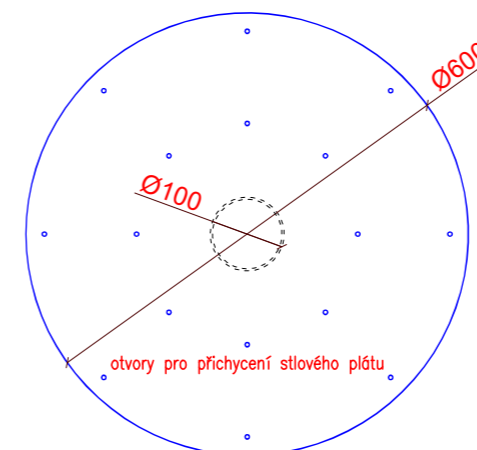
ocelový sedák B
hmotnost cca 16 kg



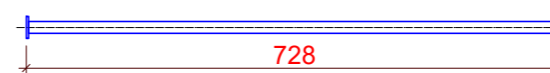
trubková police A
6x ocelová trubka 16/2 mm



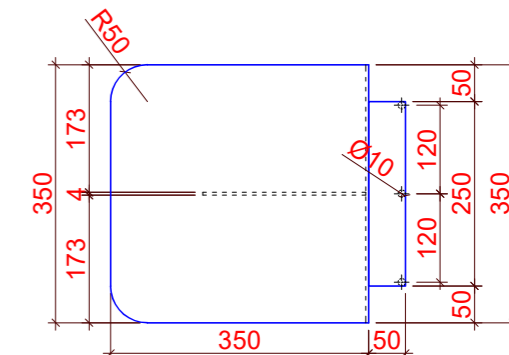
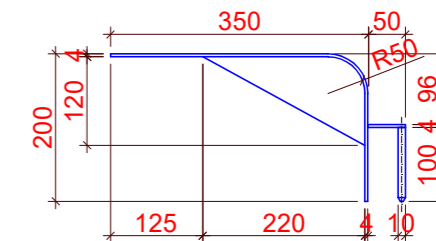
centrální noha
hmotnost cca 25 kg



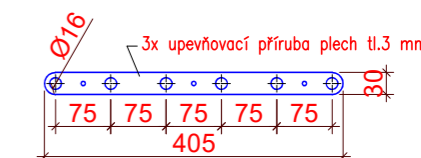
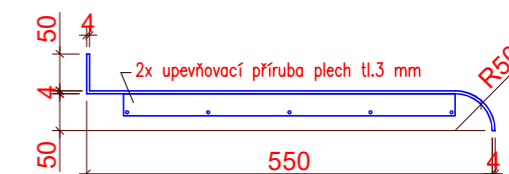
ocelová horní plocha kufrboxu
hmotnost cca 18 kg



trubková police C
6x ocelová trubka 16/2 mm



noční stolek závěsný
3x ocel.čep pr.10 mm (pro osazení do lůžka)
hmotnost cca 8 kg



materiál/povrchová úprava: ocel pískovaná/komaxit čirý



Ing. Petr Jířík

606 711 800

kovové komponenty

VŠB-TUO, Ubytovací služby Stravovací služby – hotelové pokoje budovy A/30.11.2020/A3-1:10